

Neurite Outgrowth Assay using Adult Rat Dorsal Root Ganglion (DRG) Explants

Compound testing for the following indications:

- Neuroprotection
- Neurite outgrowth

Model:

Adult rat dorsal root ganglion explants are cultured under serum free conditions in the presence or absence of neurotrophic factors on poly-lysine and laminin coated glass coverslips. After a defined culture period, explants are fixed with paraformaldehyde and are immunolabelled using a primary anti-betaIII tubulin antibody. Labelled explants are imaged and the area of neuritic halos is determined using Image Pro Plus software.

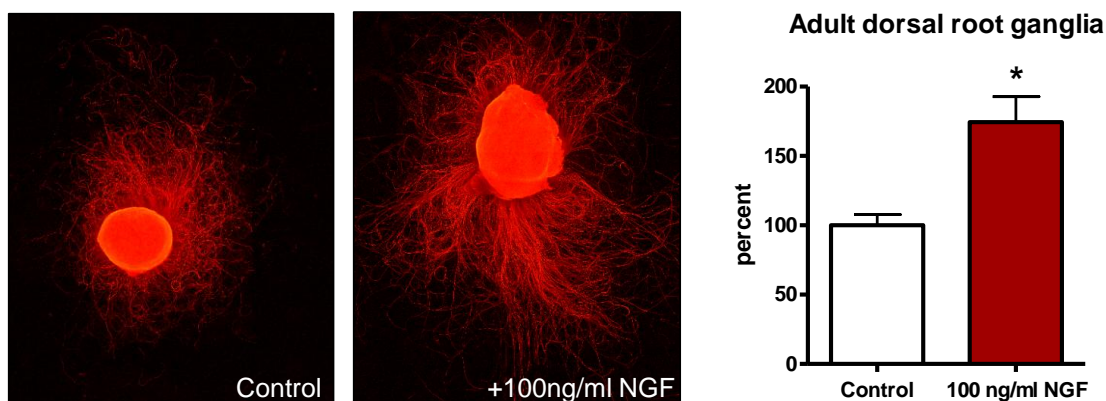


Fig.1. Neurite outgrowth of adult rat dorsal root ganglion explants. NGF (100ng/ml) induced a significant increase in neurite outgrowth of adult rat DRG explants (n>45).